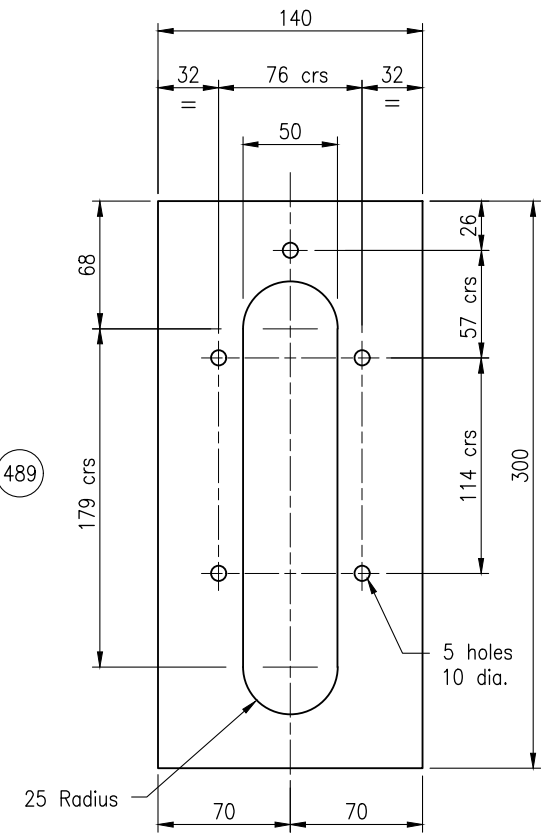
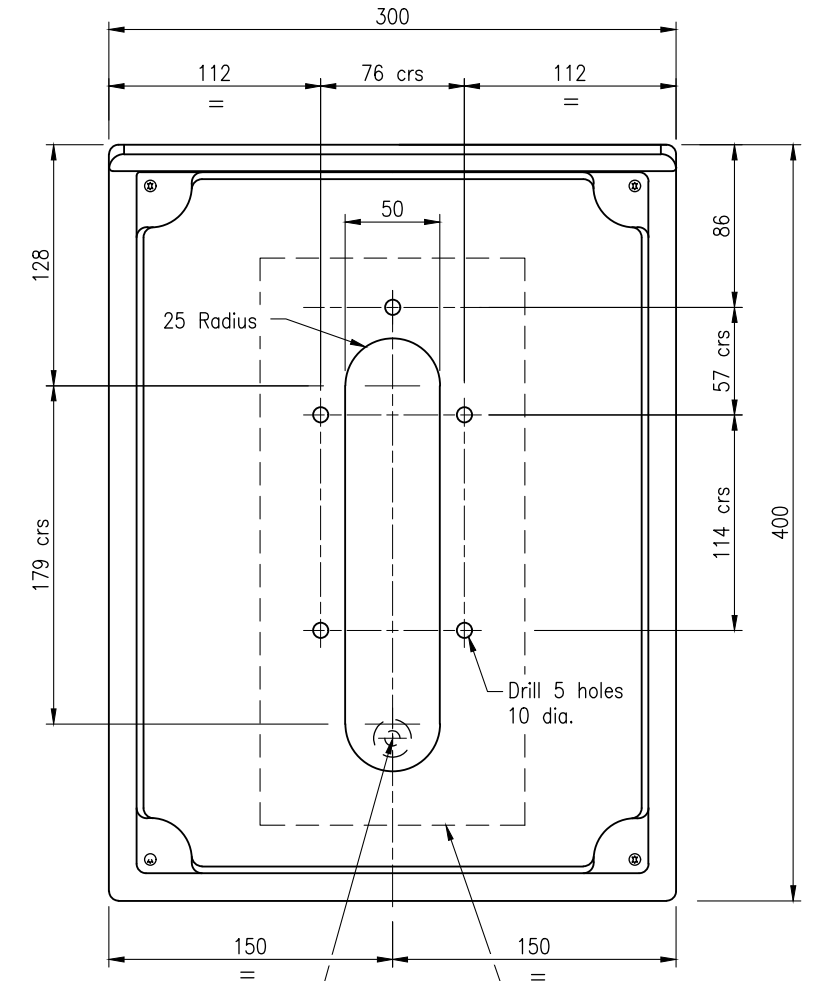


TERMINAL PANEL TRAFFIC SIGNALS  
JUNCTION BOX (TYPE A) 523

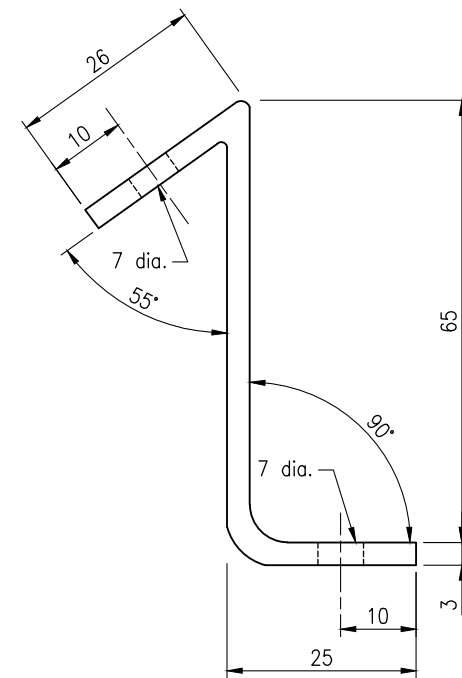
For assembly details Refer  
Standard Drawing 1414



DETAIL 2  
GASKET 519



DETAIL 3  
PENETRATIONS IN  
BACK OF ENCLOSURE 519 Refer Detail 2  
Gasket on back  
of enclosure



DETAIL 1 423

### NOTES:

1. Amend rack to suit where more terminals are required.
2. Gasket material – 3mm cork fixed with approved adhesive.
3. Dimensions are in millimetres unless shown otherwise.

### ASSOCIATED DEPARTMENTAL DOCUMENTS:

Standard Drawings  
Specifications

### REFERENCED DOCUMENTS:



Departmental Standard Drawings:  
1414 Traffic Signals – Mast Arm Traffic Signal Junction  
Box (Type A) Wiring Details  
1699 Traffic Signals/Road Lighting/ITS – Parts List

### Departmental Specifications:

MRTS93 Traffic Signals  
MRTS228 Provision of Electrical Switchboards

### Australian Standards:

AS/NZS 3000 Electrical Installations (Wiring Rules)

Department of Transport and Main Roads					
TRAFFIC SIGNALS		Standard Drawing No		1413	
MAST ARM TRAFFIC SIGNAL JUNCTION BOX (TYPE A)		A3 Not to Scale		Date 5/2026	
		B		C	